

PHILIPS

Quad HD monitor
with USB-C

Business Monitor

3000 series

27" (68.5 cm)

2560 x 1440 (Quad HD)

27B2U3601H



Redefining workflow productivity

with pop-up webcam

Speed through daily tasks in comfort with this monitor's SoftBlue technology and 120Hz refresh rate. Productivity-enhancing features like USB-C and pop-up webcam with Windows Hello deliver the performance and convenience you expect.

Designed for the way you work

- Built-in stereo speakers for multimedia
- Smart Link Sync: for uniform daisy-chained displays
- Windows Hello Certified – Seamless, Secure Access
- Eyesafe certified blue light protection and color accuracy
- Less eye fatigue with Flicker-free technology
- Adjustable Webcam: for video conferencing in comfort
- SoftBlue Technology: for comfortable viewing

Single cable USB-C connection

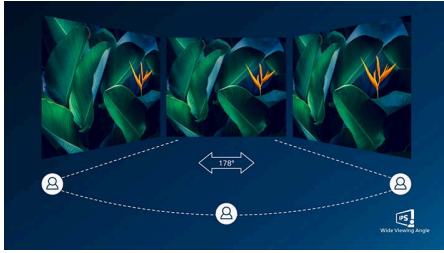
- RJ-45 to USB-C gives easy network connection with security
- USB 3.2 high speed data transfer

Superb Picture Quality

- 120Hz refresh rates for ultra-smooth images
- IPS technology for full colors and wide viewing angles
- Crystalclear images with Quad HD 2560 x 1440 pixels

Highlights

IPS technology



IPS displays use an advanced technology which gives you extra wide viewing angles of 178/178 degree, making it possible to view the display from almost any angle - even in 90 degree Pivot mode! Unlike standard TN panels, IPS displays gives you remarkably crisp images with vivid colors, making it ideal not only for Photos, movies and web browsing, but also for professional applications which demand color accuracy and consistent brightness at all times.

Crystalclear images



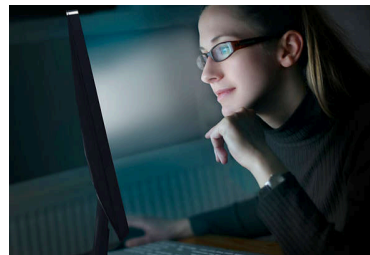
These Philips screens deliver Crystalclear, Quad HD 2560x1440 or 2560x1080 pixel images. Utilizing high performance panels with high density pixel count, enabled by high bandwidth sources, these new displays will make your images and graphics come alive. Whether you are demanding professional requiring extremely detailed information for CAD-CAM solutions, using 3D graphic applications or a financial wizard working on huge spreadsheets, Philips displays will give you Crystalclear images.

120Hz Fast refresh



For gaming and video performance, you demand display with lag free, ultra-smooth images. This Philips display redraws the screen image up-to 120 times per second, much faster than a standard display. A lower frame rate can make enemies appear to jump from spot to spot on the screen, making them difficult targets to hit. With 120Hz frame rate, you get those critical missing images on the screen which shows enemy movement in ultra-smooth motion so you can easily target them.

SoftBlue Technology



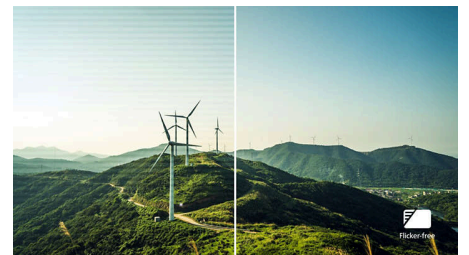
SoftBlue LED technology, combined with the monitor's low blue light panel, is an effective solution to reducing the adverse health effects caused by high exposure to blue light. In this monitor's panel, the ratio of light is reduced by nearly 50 percent while the SoftBlue LED technology works simultaneously by reducing harmful blue light rays emitted from the screen. Not to mention, the SoftBlue LED technology is tested and certified by TÜV Rheinland Eyesafe® for its effectiveness in reducing blue light emissions.

Built-in stereo speakers



A pair of high quality stereo speakers built into a display device. It can be visible front firing, or invisible down firing, top firing, rear firing, etc depending on model and design.

Flicker-free technology



Due to the way brightness is controlled on LED-backlit screens, some users experience flicker on their screen which causes eye fatigue. Philips Flicker-free Technology applies a new solution to regulate brightness and reduce flicker for more comfortable viewing.

Windows Hello Certified



Log in faster and more securely with Windows Hello. This Philips monitor is Windows Hello Certified, offering quick facial recognition and effortless access - every time you power on.



Business Monitor

Quad HD monitor with USB-C

27B2U3601H/00

Highlights

TUV Rheinland Eyesafe - RPF® 40



Philips display meets TUV Rheinland Eyesafe® standard to truly protect you from the long exposure to blue light. The always-on blue light filter not only helps reduce digital eye strain, but also guarantees color integrity.

Adjustable Webcam



Level up the comfort of video conferencing with this feature. By adjusting the webcam back and forth by 30 degrees, users can now comfortably call and attend meetings from any position that best suits them.

Smart Link Sync



Easily create a seamless multi-monitor workspace with Smart Link Sync, designed to automatically align display settings across daisy-chained monitors. Whether you're designing, presenting, or multitasking, enjoy consistent brightness and color without manual tweaks. Choose from OSD Sync or Light Sync modes (Low, Mid, or High) on the primary monitor to match your environment. For identical monitors, any mode ensures uniform visuals; for mixed models, Light Sync intelligently adjusts luminance for a balanced, professional look across screens.

USB-C Docking with RJ45



Simplify all peripherals from monitor to PC using one-cable-docking USB Type-C connector, includes networking, high resolution video output from PC to monitor, and surfing on Internet without an additional network cable, even without LAN port on your notebook. RJ45 connection through USB-C offers a fast and secure connection when needed. Getting the fastest data speeds allows you to transfer data from a HDD to your PC faster than ever. Additionally, USB-C with power delivery can even enable you to power and charge your notebook from the monitor, eliminating the need for extra power cables.

High speed data transfer

USB 3.2 high speed data transfer

Specifications

Picture/Display

Panel Size: 27 inch / 68.5 cm
 Aspect ratio: 16:9
 LCD panel type: IPS technology
 Backlight type: W-LED system
 Pixel pitch: 0.2331x0.2331mm
 Brightness: 350 cd/m²
 Display colors: 16.7M (true 8 bits)
 Color gamut (typical): sRGB 125% , NTSC 114% *
 Contrast ratio (typical): 1500:1
 SmartContrast: 50,000,000:1
 Response time (typical): 4 ms (Gray to Gray)*
 Viewing angle: 178° (H) / 178° (V), @ C/R > 10
 Picture enhancement: SmartImage
 Maximum resolution: 2560x1440@120Hz(HDMI/DP/USBC)*
 Effective viewing area: 596.74(H)x335.66(V) mm
 Scanning Frequency: 30-230 KHz (H) / 48 -120 Hz (V)
 sRGB
 SoftBlue
 Flicker-free
 Pixel Density: 109 PPI
 Display Screen Coating: Anti-Glare, 3H, Haze 25%
 EasyRead
 Adaptive sync
 EyeSafe
 Smart Link Sync: When used as a primary or secondary monitor*

Connectivity

Signal Input: HDMI 2.0 x 1, DisplayPort 1.4 x 1, USB-C x 1 (upstream, DP Alt mode, Data, PD)
 Sync Input: Separate Sync, Sync on Green
 Audio (In/Out): Audio out
 RJ45: Ethernet LAN (USB 2.0: 10M/100M; USB 3.0: 1000M)
 Signal Output: DisplayPort Out
 HDCP: HDCP 1.4 (HDMI / DisplayPort / USB-C), HDCP 2.2 (HDMI / DisplayPort / USB-C)
 HBR3: Yes (DP,USB-C)
 USB Hub: USB3.2, Gen1, 5G, Upstream: USB-C x1 (Full); Downstream: USB-A x 3 (with x1 fast charge B.C 1.2), USB -C2 x1 (data, 15W)

Power Delivery

Max power delivery: up to 90W (5V/3A, 7V/3A, 9V/3A, 10V/3A, 12V/3A, 15V/3A, 20V/3.25A, 20V/4.5A)
 Version: USB PD version 3.0

Convenience

Built-in Speakers: 2W x 2
 Plug & Play Compatibility: DDC/CI, Mac OS, sRGB, Windows 11 / 10
 User convenience: SmartImage, Input, Brightness, Menu, Power On/Off
 OSD Languages: Brazil Portuguese, Czech, Dutch, English, French, Finnish, German, Greek, Hungarian, Italian, Japanese, Korean, Portuguese, Polish, Russian, Simplified Chinese, Spanish, Swedish, Traditional Chinese, Turkish, Ukrainian
 Other convenience: Kensington lock, VESA mount (100x100mm)
 Control software: SmartControl
 Built-in webcam: 5.0 megapixel camera with microphone and LED indicator (for Windows Hello)
 Webcam tilt function: -/+30 degree

Stand

Height adjustment: 150 mm
 Pivot: -/+90 degree
 Swivel: -/+180 degree
 Tilt: -5/30 degree

Power

ECO mode: 13.8 W (typ.)
 Power supply: Built-in, 100-240VAC, 50-60Hz
 Off mode: 0.3W (typ)
 On mode: 23.43 (typ.) (EnergyStar test method)
 Standby mode: 0.35 W (typ)
 Power LED indicator: Operation - White, Standby mode- White (blinking)
 Energy Label Class: D

Dimensions

Packaging in mm (WxHxD): 730 x 445 x 139 mm
 Product without stand (mm): 615 x 361 x 46 mm
 Product with stand(max height): 615 x 539 x 146 mm

Weight

Product with packaging (kg): 9.17 kg
 Product with stand (kg): 6.44 kg
 Product without stand (kg): 4.77 kg

Operating conditions

Altitude: Operation: +12,000ft (3,658m), Non-operation: +40,000ft (12,192m)
 Temperature range (operation): 0°C to 40 °C
 Relative humidity: 20%-80 %
 Temperature range (storage): -20°C to 60 °C
 MTBF (demonstrated): 70,000 hrs (excluded backlight)

Sustainability

Environmental and energy: Energy Star, EPEAT*, RoHS
 Post consumer recycled plastic: 85%
 Recyclable packaging material: 100 %
 Specific Substances: PVC / BFR free housing

Compliance and standards

Regulatory Approvals: CB, CE Mark, TUV/GS, TUV Ergo, TCO Certified, TCO Certified Edge, EAC, EAC ROHS, MEPS, UKCA, EMF, FCC, ICES-003, TÜV Rheinland Low Blue Light (Hardware Solution), eyesaf e® CERTIFIED 2.0

Cabinet

Finish: Texture
 Foot: Black
 Front bezel: Black
 Rear cover: Black

What's in the box?

Cables: HDMI cable, DisplayPort cable, USB-C to C cable, Power cable
 Monitor with stand
 User Documentation

