

# PHILIPS

## EVNIA



QD OLED gaming  
monitor

QHD Gaming monitor

Evnia 6000

26.5" (67.3 cm)

2560 x 1440 (Quad HD)



27M2N6501L

## Your gaming experience to the utmost

This monitor is built for gaming at high speeds. Its 240 Hz refresh rates and QD OLED panel make it a combination of incredible speed and premium picture quality.

### Features designed for gamers' needs

- Stark ShadowBoost: for enhancing visibility in dark scenes
- Protects and cools QD-OLED displays to reduce burn-in
- AI-enhanced Ambiglow: for intensified entertainment
- Evnia Precision Centre: Maximise Your Gaming Experience
- Smart Sniper: Improved control when you zoom in on targets
- MultiView enables simultaneous dual connection and view
- Smart Crosshair: for better aim and more fun

### Built for fast action

- AMD FreeSync™ Premium; tear free, stutter free, fluid gaming
- Ultra-fast 240 Hz refresh rate for virtually lag-free gaming

### Immersive visuals

- High Dynamic Range (HDR) for more lifelike colourful visuals
- Crystal clear images with Quad HD 2560 x 1440 pixels
- True 10-bit display reproduces smoother gradients on visuals

# QHD Gaming monitor

QD OLED gaming monitor

27M2N6501L/00

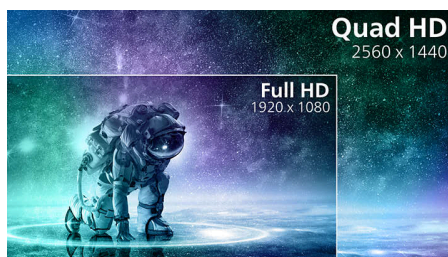
## Highlights

### Ultra-fast 240 Hz refresh rate



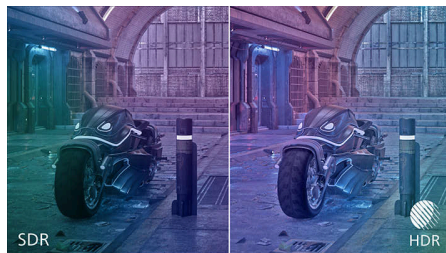
While playing the most intense, engaging and action-oriented games, the ultra-fast 240 Hz refresh rate creates an ultra-smooth, lag-free gaming experience. This Philips display redraws the screen image up to 240 times per second, effectively faster than a standard display. 240 Hz give superior motion and clarity to the visuals, especially for fast-paced games like FPS and racing games. With the Philips 240 Hz display, action sequences in gameplay look judder-free and ghost-free. You will experience deeper immersion and feel alive in the game.

### CrystalClear images



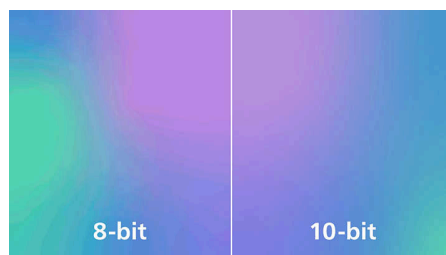
These Philips screens deliver CrystalClear, Quad HD 2560 x 1440 or 2560 x 1080 pixel images. Utilising high performance panels with a high-density pixel count enabled by high bandwidth sources, these new displays will make your images and graphics come alive. Whether you are a demanding professional requiring extremely detailed information for CAD-CAM solutions using 3D graphic applications, or a financial wizard working on huge spreadsheets, Philips displays will give you CrystalClear images.

### High Dynamic Range (HDR)



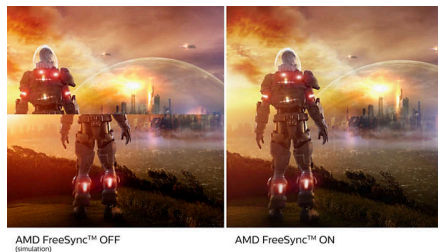
High Dynamic Range delivers a dramatically different visual experience. With astonishing brightness, incomparable contrast and captivating colour, images come to life with much greater brightness while also featuring much deeper, more nuanced darks. It renders a fuller palette of rich new colours never before seen on a display, giving you a visual experience that engages your senses and inspires emotions.

### True 10-bit colour depth



With this Philips true 10-bit colour display, you can see colour-critical professional work of exceptional colour accuracy that meets professional standards. Compared with conventional 8-bit colour displays, this Philips monitor produces a more natural transition between hues for smoother gradients.

### AMD FreeSync™ Premium



Gaming shouldn't be a choice between choppy gameplay or broken frames. AMD FreeSync™ Premium equips serious gamers with a fluid,

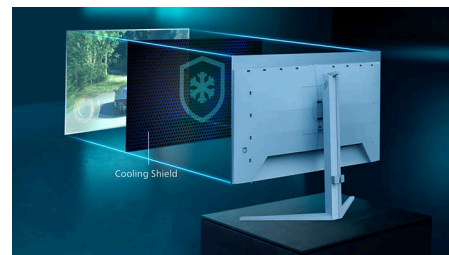
tear-free gameplay experience at peak performance. There are no compromises, game confidently with a high refresh rate, low framerate compensation and low latency.

### QD OLED technology



QD-OLED represents a hybrid approach that marries OLED panels and quantum dot technology. By combining what's best of both, QD-OLED guarantees high contrast, deep blacks and unlimited viewing angles, with a higher peak brightness and more vibrant colours.

### Cooling shield



Burn-in is a real concern for users of QD-OLED screens. To increase the lifespan of your display, this monitor has an integrated graphene shield which keeps your display cool. The graphene evenly disperses heat generated by the blue-light emitted from your screen and cools more effectively than graphite. For gamers, this means you can play at the brightness level you prefer with a reduced risk for burn-in and a display which stays pixel-perfect for longer.



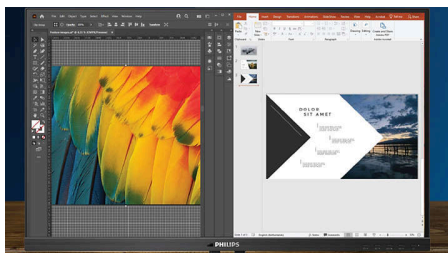
## Highlights

### AI-enhanced Ambiglow



Our AI-enhanced processor analyses the incoming image content and continuously adapts the colour and brightness of the emitted light to match the image. This feature adds a new dimension to your viewing experience. The innovative Ambiglow uses its AI capabilities to create a truly immersive and customisable gaming experience. From filling your gaming room with colour to feeling like you are part of the game, the AI-enhanced Ambiglow is made to make your gaming experience the best it's ever been by combining intelligence, colour and light.

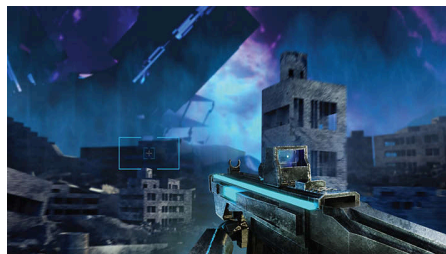
### MultiView technology



With the ultra-high resolution Philips MultiView display, you can now experience a world of connectivity. MultiView enables active dual

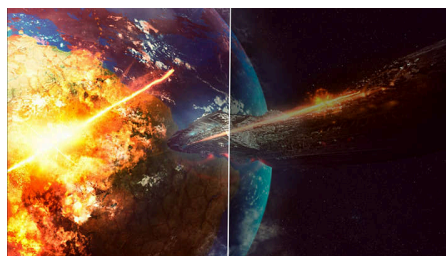
connect and view so that you can work with multiple devices like a PC and notebook simultaneously, for complex multitasking.

### Smart Crosshair



Colour of Crosshair is set by default. When Smart Crosshair is on, the colour will change as a complementary colour to the background colour. Smart Crosshair enhances the aiming accuracy so you can spot the enemies more easily.

### Stark ShadowBoost



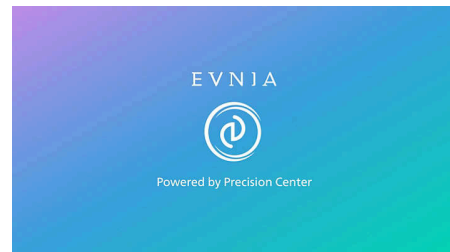
This feature enhances dark scenes without overexposing lightened areas. The Stark ShadowBoost feature has three selectable levels that offer texturised images with better colour saturation and higher contrast, so you can see better in both light and dark environments. In addition, this feature helps you fine-tune your sight so that enemies get exposed more quickly when gaming.

### Smart Sniper



Smart Sniper gives you better control over your scope for precise aiming. It overlays an additional window at either the top or centre of your screen, and enables you to select a zoom level up to 2 x your normal magnification.

### Evnia Precision Centre



Evnia Precision Centre is an easy-to-use software designed to optimise and personalise your Evnia monitor. Whether you're a casual or competitive gamer, it offers a wide range of customisation options to match your unique gaming style. With intuitive controls and seamless navigation, Evnia Precision Centre gives you full control, providing everything you need to elevate your gaming to the next level — right at your fingertips.



Flicker-free



## Specifications

### Picture/Display

**Panel Size:** 26.5"/67.3 cm  
**Aspect ratio:** 16:9  
**Monitor Panel Type:** QD OLED  
**Pixel pitch:** 0.2292 x 0.2292 mm  
**Brightness:** SDR: 200 (APL 100%) nit, HDR: 400nits (APL 10%) nit  
**Display colours:** 1.07B (10 bits)  
**Colour gamut (typical):** Adobe RGB 98%; DCI-P3:99%, sRGB: 147.5%, NTSC 120%.\*  
**Contrast ratio (typical):** 1.5M:1  
**SmartContrast:** Mega Infinity DCR  
**Response time (typical):** 0.03 ms (Grey to Grey)\*  
**Viewing angle:** 178° (H)/178° (V), @ C/R > 10000  
**Picture enhancement:** SmartImage game  
**Maximum resolution:** 2560 x 1440 @ 240 Hz (DP/HDMI)  
**Effective viewing area:** 590.42 (H) x 333.72 (V) mm  
**Scanning Frequency:** 30k-390 kHz(H)/48-240 Hz(V)  
**sRGB**  
**Delta E:** < 2 (sRGB)  
**Flicker-free**  
**Pixel Density:** 111 PPI  
**Display Screen Coating:** Anti-reflection, 2H  
**Low Input Lag**  
**EasyRead**  
**AMD FreeSync™ technology**  
**G-SYNC**  
**HDR:** HDR 10  
**Pixel format:** RGB Q-Stripe\*  
**Smart Crosshair**  
**Stark ShadowBoost**  
**Clear MR Tier:** 13,000  
**Smart Sniper**  
**Shadow Boost**  
**SoftBlue technology:** Yes\*

### Connectivity

**Signal Input:** HDMI 2.1 x 2, DisplayPort 1.4 x 1  
**Audio (In/Out):** Headphone out  
**HDCP:** HDCP 1.4 (HDMI/DisplayPort), HDCP 2.3 (HDMI/DisplayPort)  
**USB Hub:** USB 3.2 Gen 1/5 Gbps, USB-B upstream x 1, USB-A downstream x 2 (with 1 for fast charge)

### Convenience

**Plug and Play Compatibility:** DDC/CI, Mac OS, sRGB, Windows 11/10  
**User convenience:** Power On/Off, Menu/OK,

Input/Up, Game Settings/Down, SmartImage game/Back  
**OSD Languages:** Brazil Portuguese, Czech, Dutch, English, Finnish, French, German, Greek, Hungarian, Italian, Japanese, Korean, Polish, Portuguese, Russian, Spanish, Simplified Chinese, Swedish, Turkish, Traditional Chinese, Ukrainian  
**Other convenience:** Kensington lock, VESA mount (100 x 100 mm), LowBlue Mode  
**MultiView**  
**Ambiglow:** Ambiglow 3-sided

### Stand

**Height adjustment:** 130 mm  
**Pivot:** +90  
**Swivel:** -/+ 30 degree  
**Tilt:** -5/20 degree

### Power

**Power supply:** Internal, 100–240 VAC, 50–60 Hz  
**Off mode:** 0.3 W (typ.)  
**On mode:** 61.3 W (typ.)  
**Standby mode:** 0.5 W (typ.)  
**Power LED indicator:** Operation - White, Standby mode - White (flashing)  
**Energy Label Class:** E

### Dimensions

**Packaging in mm (W x H x D):** 730 x 445 x 139 mm  
**Product without stand (mm):** 609 x 355 x 61 mm  
**Product with stand (max height):** 609 x 531 x 261 mm

### Weight

**Product with packaging (kg):** 8.89 kg  
**Product with stand (kg):** 5.98 kg  
**Product without stand (kg):** 4.19 kg

### Operating conditions

**Altitude:** Operation: +12,000 ft (3658 m), Non-operation: +40,000 ft (12,192 m)  
**Temperature range (operation):** 0°C to 40 °C  
**MTBF:** 30,000 (Excluded backlight) hour(s)  
**Relative humidity:** 20%-80 %  
**Temperature range (storage):** -20°C to 60 °C

### Sustainability

**Environmental and energy:** RoHS  
**Recyclable packaging material:** 100 %  
**Post-consumer recycled plastics:** 35%\*

### Compliance and standards

**Regulatory Approvals:** CB, CE Mark, TUV/ISO9241-307, TUV-BAUART, EAC, EAC ROHS, MEPS, PSB, KC, KCC, CEL, CCC, CECP, BSMI, UKCA, EMF, FCC, ICES-003

### Cabinet

**Colour:** White  
**Finish:** Textured

### What's in the box?

**Cables:** DP cable, HDMI cable, USB cable, power cable  
**Monitor with stand**  
**User Documentation**

- \* For best output performance, please always ensure that your graphic card is capable of achieving the maximum resolution and refresh rate of this Philips display.
- \* Low blue light compliance: The ratio of display emission light in the range from 415 - 455 nm to the display emission of 400 - 500 nm shall be less than 50%.
- \* Adobe RGB and DCI-P3 Coverage based on CIE1976, sRGB Area based on CIE1931, NTSC Area based on CIE1976.
- \* Response time value equal to SmartResponse. The measurement pattern is 1 horizontal line.
- \* Active pixels: 2560(H) x 1440(V) Number of total pixels: 2576(H) x 1456(V); extra pixels on each side, space reserved for pixel orbiting.
- \* NVIDIA® G-SYNC® support interface: DisplayPort
- \* Make sure to update NVIDIA® G-SYNC® driver to the latest version, see more information on NVIDIA website: <https://www.nvidia.com/>
- \* Make sure that your graphic card supports NVIDIA® G-SYNC®
- \* 2020 Advanced Micro Devices, Inc. All rights reserved. AMD, the AMD Arrow logo, AMD FreeSync™ and combinations thereof are trademarks of Advanced Micro Devices, Inc. Other product names used in this publication are for identification purposes only and may be trademarks of their respective companies.
- \* This monitor strives for sustainability: the stand's feet and headphone holder are made with 35% recycled plastic.
- \* The monitor may look different from feature images.
- \* The products and accessories listed on this leaflet may differ by country and region.

